

Strategic Summary (2016-18)

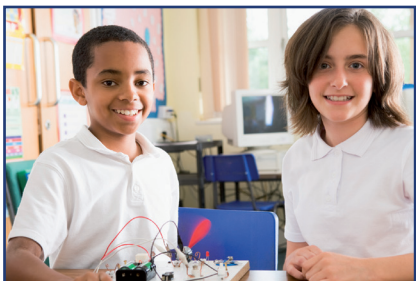
West Berkshire Children's Delivery Group

West Berkshire's context

West Berkshire is a great place for children to grow up. Generally West Berkshire's children and young people do well. They are safe and healthy, achieve high educational standards through attending good schools, and move on into higher education or employment and a secure and prosperous future. West Berkshire Local Safeguarding Children Board (LSCB) is aware that our more vulnerable children don't always have this childhood experience and their outcomes are sometimes impacted adversely.

We understand children in the context of their families and communities, and we prioritise supporting vulnerable families and working with communities so that their children can do well and be safe within their own family whenever possible.

Where children and young people can't remain with their birth or extended families, and are looked after by the local authority, we want them to know that we are ambitious, driven and committed "Corporate Parents", striving to help them reach their full potential. For these children and young people, we prioritise finding the best permanent home for them, so that they can have a stable base from which to build a secure future; and supporting them, while in our care, to be safe, stay healthy and achieve academically and otherwise.



“Together we will
grow resilient
children, families
and communities”

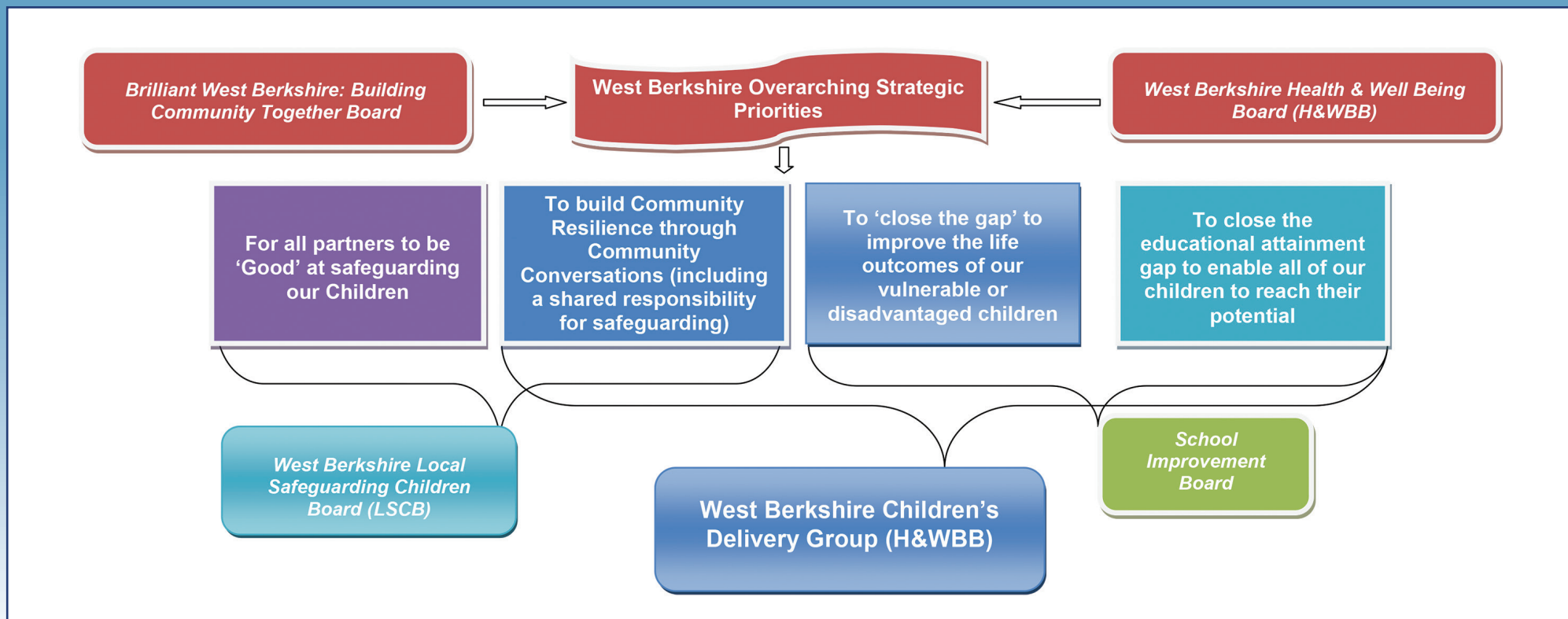
West Berkshire Children's Delivery Group Targeted Prevention Vision

Our vision is for our most vulnerable children, including those looked after by the local authority, to be effectively safeguarded and protected and to achieve outcomes that are every bit as good as their peers across all areas of their lives. We will work closely with West Berkshire LSCB to achieve this vision.

With specific reference to Targeted Prevention our vision is that we will work together to reach a family early in the life of a child and early in the life of a challenge, to find solutions together, breaking down barriers between services and sharing responsibility as a multi-professional team.

We will work together ('with,' not 'to,' or 'for') recognising that families and the people important to them are the experts in their lives and can find solutions together, giving thought to the 'whole child' and the 'whole family' and the community they live in.

Together we will grow resilient children, families and communities; built on the strengths and commitment of our local residents, staff and volunteers.



West Berkshire Children's Delivery Group Priorities

- 1) To provide a coherent vision for West Berkshire partner agencies 'Targeted Prevention,' including developing consistent understanding of children's levels of need and the risk and needs that will be prioritised by local services, to intervene more effectively, early.
- 2) To promote emotional wellbeing in children and young people, through prevention, early identification and provision of appropriate services.
- 3) To improve the health and educational outcomes of Looked After Children through prevention and the provision of high quality health and social care support and services.
- 4) To improve the educational achievement of children on free school meals to bring them into line with the overall achievement of all children